

Solanas[®]

Posterior Cervico-Thoracic Fixation System

SYSTEM FEATURES

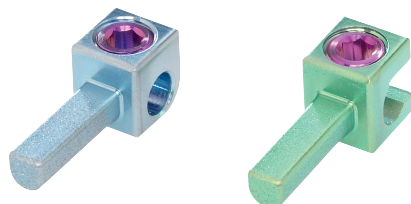
- Top loading, top tightening system
- Multi-axial screws offer up to 80 degree variability
- Proven buttress-thread closure mechanism helps prevent cross-threading
- User friendly, color-coded implants and instrumentation ease identification
- Integrated functioning of screws, rods, and hooks



Alphatec Spine[®]

Solanas — Posterior Cervico-Thoracic Fixation System

The precision-machined size and pitch of the locking cap threads are designed to assure quick insertion while minimizing potential for cross threading.



Adjustable Bridges in lengths 26, 37 & 60mm connect rods to increase construct stability.



Rod-to-Rod Connectors offer additional system variability by adjoining the 3.3mm rod with the 5.5mm rod of the Zodiac® system.



Implants (in millimeters)

Included in set



Optional



Screws	Diameter			
	3.5	4	4.35	3.5 smooth shank
8	●	●	●	●
10	●	●	●	●
12	●	●	●	●
14	●	●	●	●
16	●	●	●	●
18	●	●	●	●
20	●	●	●	●
22	●	●	●	●
24	●	●	●	●
26	●	●	●	●
28	●	●	●	●
30	●	●	●	●
32	●	●	●	●
34	●	●	●	●
36	●	●	●	●
38	●	●	●	●
40	●	●	●	●
42	●	●	●	●
44	●	●	●	●
46	●	●	●	●
48	●	●	●	●
50	●	●	●	●

Part No.	Description	Qty.
Rods		
63001-120	Solanas Rod - 120mm	4
63001-240	Solanas Rod - 240mm	4
63002-500	3.3mm - 5.5mm Transitional Rod - 500mm	4
Adjustable Bridges		
63003-26	26mm Adjustable Bridge - Small	2
63003-37	37mm Adjustable Bridge - medium	2
63003-60	60mm Adjustable Bridge - Large	2
Set Screws		
63020	Solanas Hexalobe Set Screw	20
Rod-to-Rod Connectors		
63008	3.3mm - 5.5mm Axial Rod Connector	2
63009	3.3mm - 5.5mm Parallel Rod Connector	2
63010	3.3mm - 3.3mm Parallel Rod Connector	2
63011	3.3mm - 3.3mm Axial Rod Connector	2
Cervical Hooks		
63012	Cervical Hook - 6mm	6
63013	Cervical Hook - 5mm	6
Lateral Connectors		
63014	Closed Lateral Rod Connector	6
63015	Open Lateral Rod Connector	6



CORPORATE HEADQUARTERS

5818 El Camino Real
Carlsbad, California 92008

CUSTOMER SERVICE

Toll Free: 800.922.1356
Local: 760.431.9286
Fax: 800.431.1624

Solanas, Zodiac and the Alphatec Spine logo are trademarks of Alphatec Spine, Inc. © 2015 Alphatec Spine, Inc. All rights reserved.